
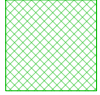


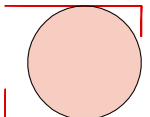
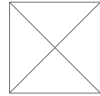


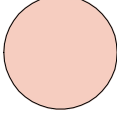



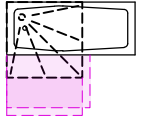
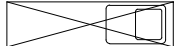
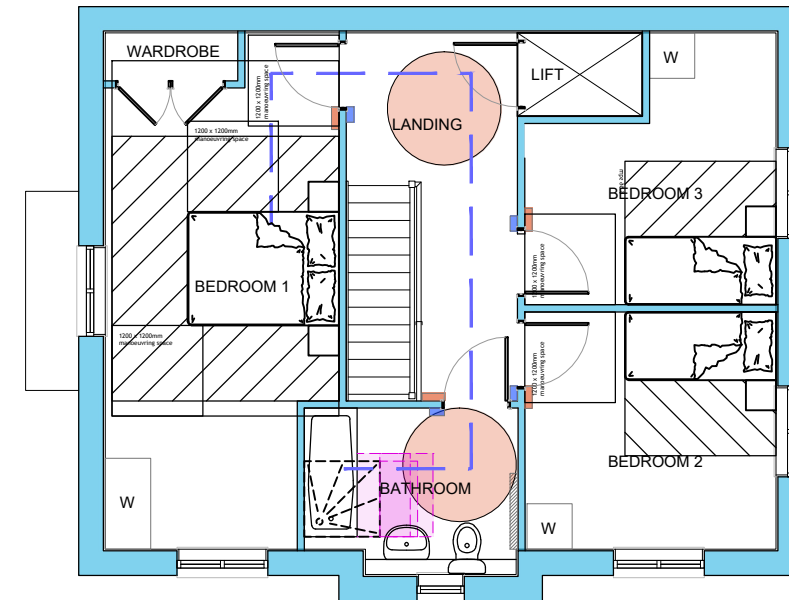
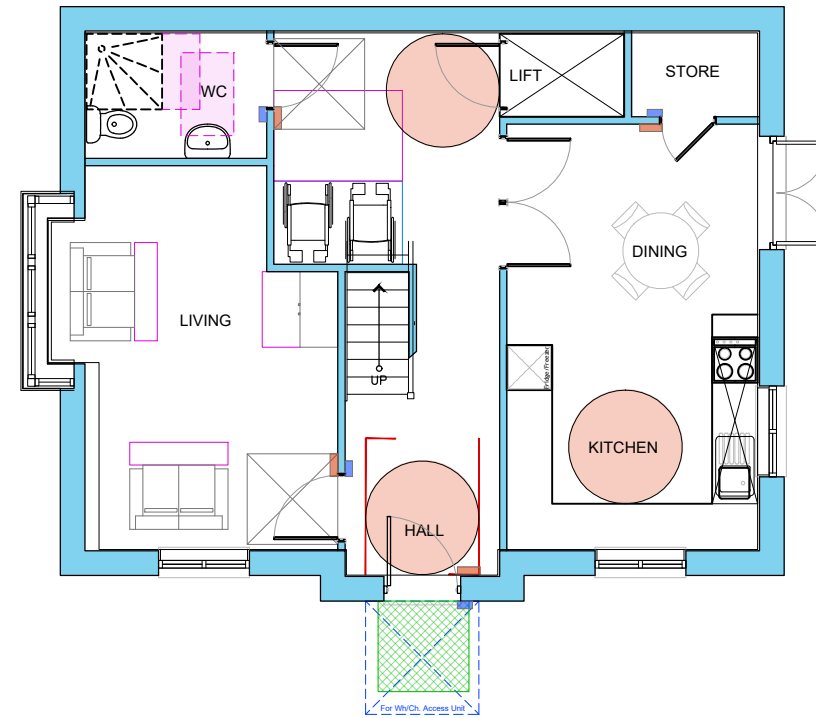


Wheelchair Unit Legend

-  1500mm sq level Landing at Entrance
-  Entrance covered for 1200mm depth and width
-  Min. 200mm nib to following edge,
-  Min. 300mm nib to leading edge,
-  1500mm clear turning circle with Door closed. Min. 300mm nib to leading edge, maintained for 1800mm beyond door internally. 150mm nib to hinge side of Front Door
-  1200mm sq manoeuvring zone
-  PW Glazing to principle window of living area to start max. 850mm above floor level
-  1000mm wide clear access zone
-  1500mm clear turning circle
-  Ceiling Hoist Route
-  Min. clear opening width for all access doors 850mm
-  1000 x 1000 x 100mm clear zone for fitting of rails
-  Bath & level access Shower provision
-  2.2m length of adjustable height worktop incl. fittings



Plot: 118

Project:-  
Wivenhoe, Land South of Elmstead Road, off Richard Avenue

Description:-  
HAM4(3)  
Floor Plans

